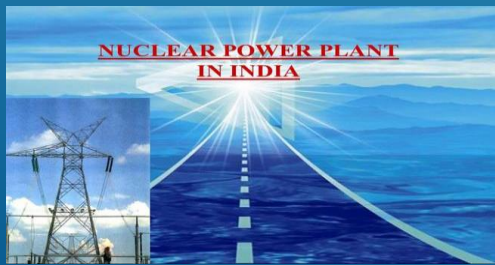


WELCOME TO OPEN ACCESS AND RETAIL COMPETITION





Electricity is a basic need for society and as utility we provide that essential service

BESCOM CAN MATCH DEMAND AND SUPPLY UNDER NORMAL CONDITIONS

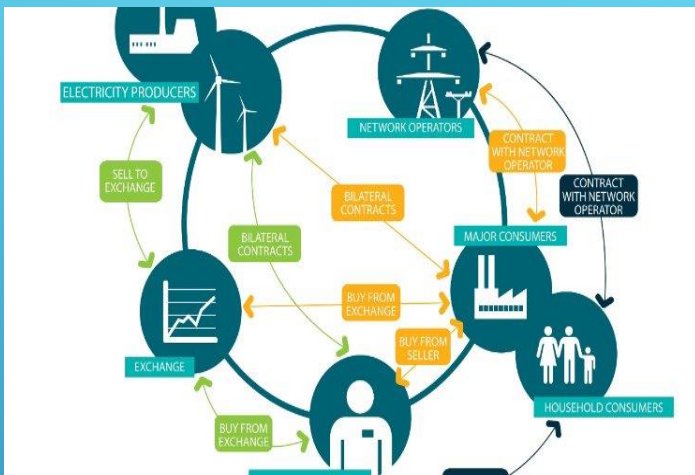
- ▶ *Short term outages can be managed by*
 - ▶ *Buying power Through IEX and URS*



- ▶ *Medium and prolonged outages needs*
 - ▶ *More detailed approach based on power purchase from IPP sources*
 - ▶ *Needs competitive bidding process*
 - ▶ *BESCOM is purchasing power on short term basis through nodal agency*

MANAGING DEMAND AND SUPPLY DURING EXIGENCIES LEADING TO SHORTAGE OF POWER

OPEN ACCESS



- **Open Access** means the non-discriminatory provision for the use of transmission lines or distribution system or associated facilities with such lines or system by any licensee or consumer or a person engaged in generation in accordance with the regulations specified by the Appropriate Commission.
- In accordance with the KERC Open access Regulations 2004 and further amendments thereon, open access is being allowed to HT consumers within BESCOM with Contract Demand > 1MW



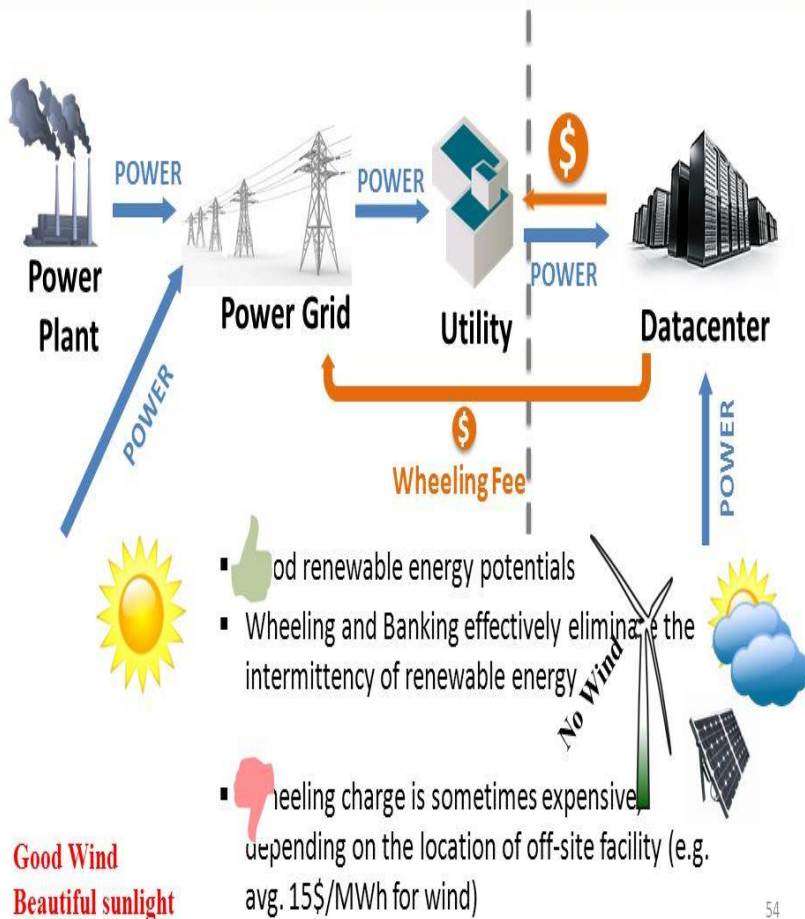
OPEN ACCESS

- *Used mainly by Large HT consumers.*
- *As a cheaper means*
- *For utility this means loss of revenue*
- *HT consumers will use utility power during peaks*
- *Leads to overload on utility at peaks.to manage the power supply.*

FROM BESCOM SIDE

- *15 min block billing enforces HT consumers to utilize the energy that they have purchased in that particular block*
- *This Improved utility revenues in a big way*



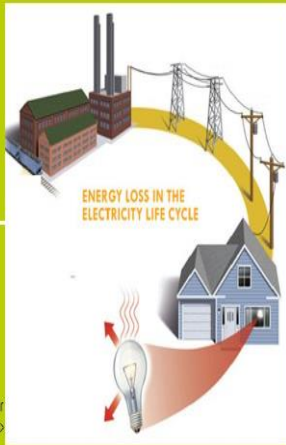


WHEELING & BANKING

- The Wheeling & Banking Agreements have been executed with the intended IPPs who proposes to wheel power to the HT installations within BESCOM jurisdiction with collection of Wheeling charges & Banking charges, cross subsidiary charges
- There are two types of consumers:
 - Captive and non captive.
 - Captive consumers include both captive and group captive

W&B

REGULATORY RULES ON NETWORK
CHARGES FOR THIRD PARTY
TRANSPORTATION OF ENERGY



Slide courtesy of Leshan Moodliar
<MoodliarL@elec.durban.gov.za>

http://www.gsi.in/power.org/sites/default/files/Energy_loss.jpg

COMMENTS / VIEWS / DISCUSSION

Captive generating plant means the power plant setup by any person to generate electricity primarily for his own use and includes a power plant setup by any co-operative society or association of persons for generating electricity primarily for use of members of such co-operative society or association.

Non-captive generating plant means the power plant setup by any person to generate electricity primarily for third party sale.

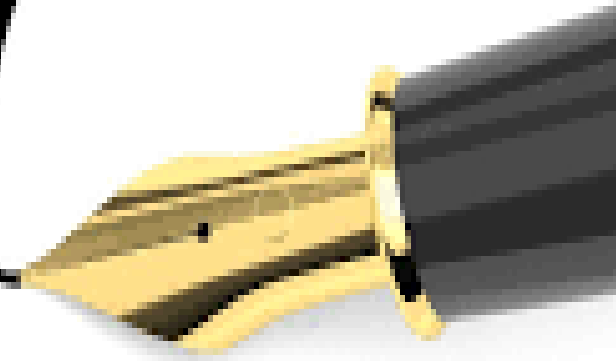
W&B



© BCCL 2016. ALL RIGHTS RESERVED.

- **No charges for captive consumers.**
- **Group captive consumers - 0.1% to 26%,
No limitation for the consumers in the group**
- **Stringent regulations for limitation to the consumers formed in a group.**

Thank
you



DeskComments.com